

Ethernet Access

Ethernet Access

Connect branch offices to a head office or connect your end user's premises to your point of presence



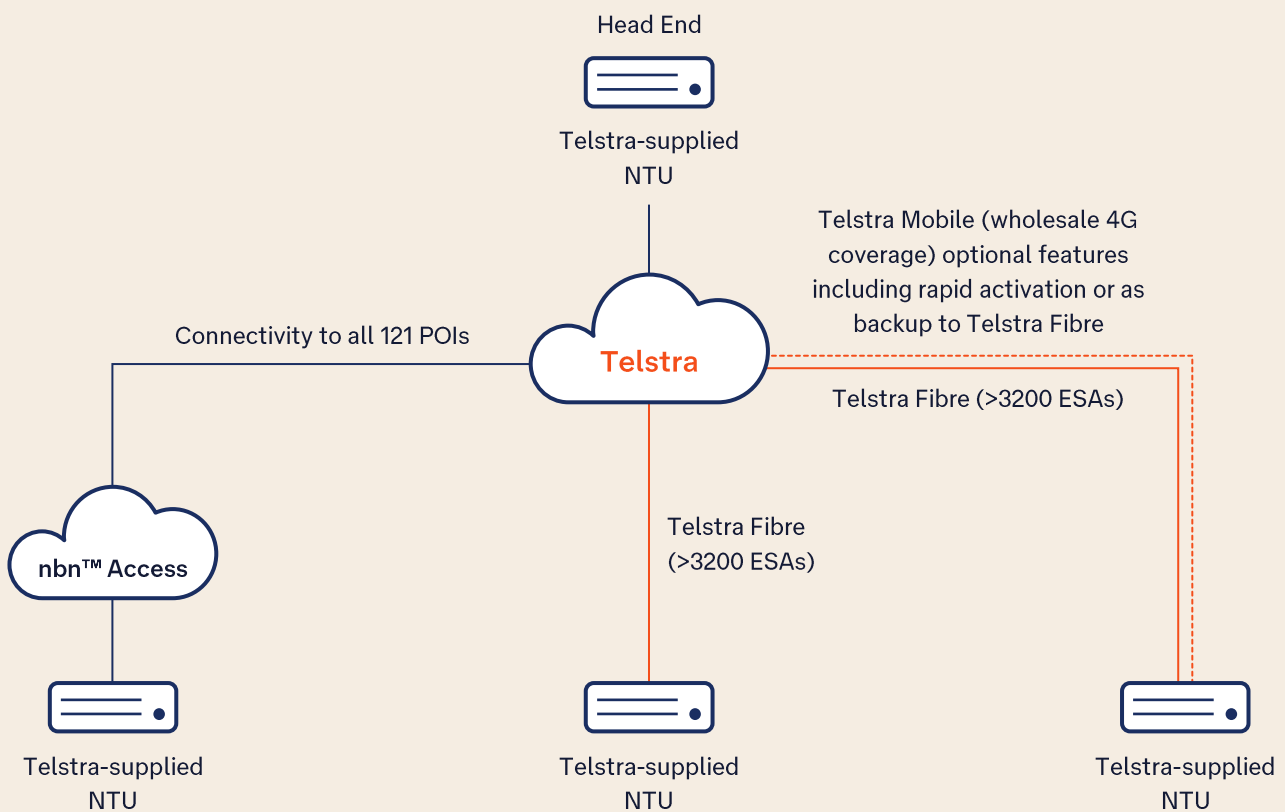
Extensive coverage

- In >3200 Exchange Service Areas
- Reaching 140,000 business premises



Flexibility for you and your customers

- Range of bandwidth options
- Multiple classes of service
- Network topology & access resiliency options

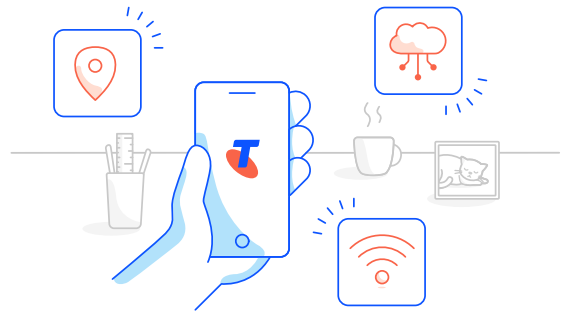


Deliver sooner with Rapid Activation

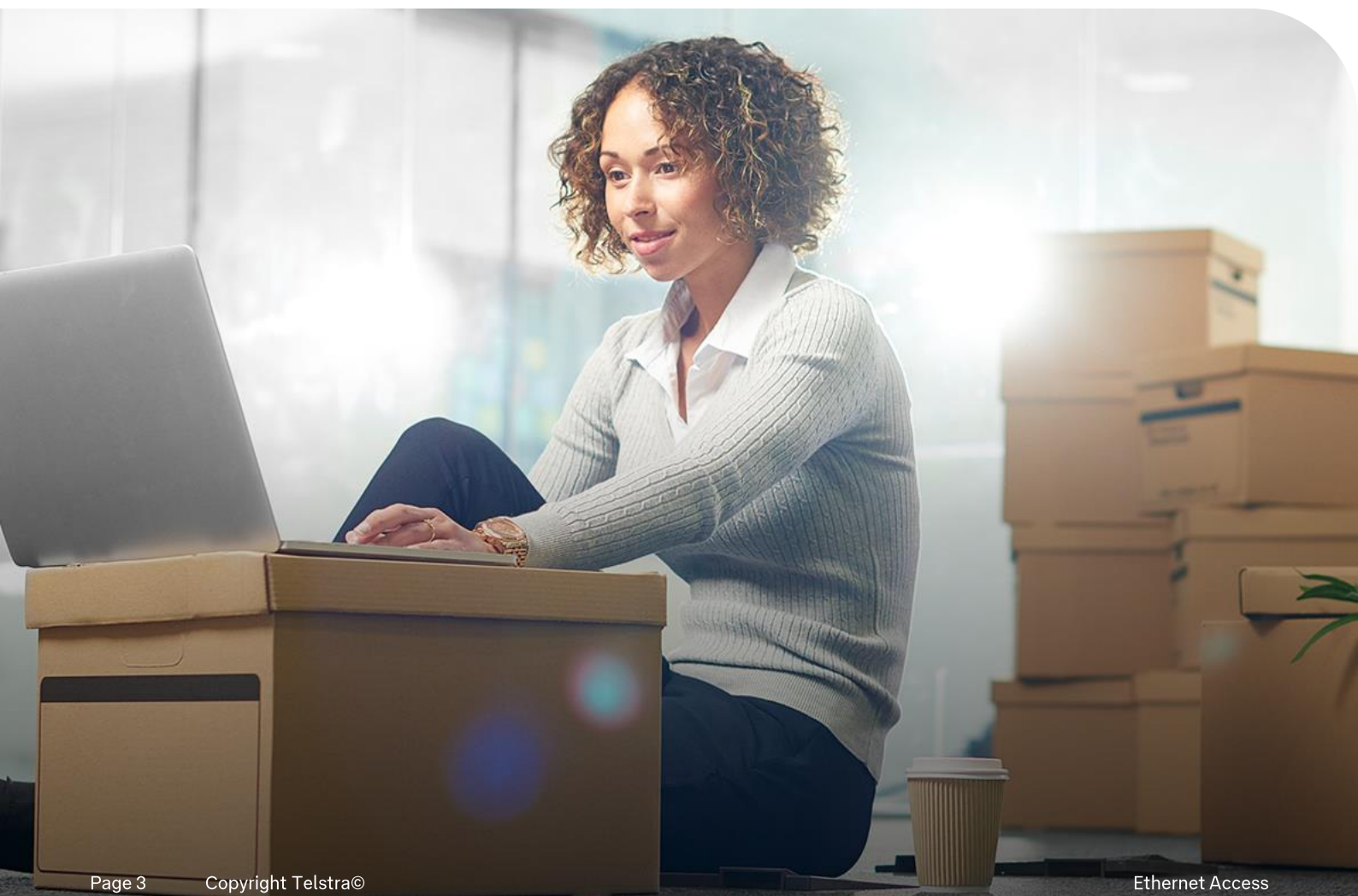
Now, using Rapid Mobile Activation you can activate an interim ethernet access service in as little as 8 working days.



Simple fixed monthly cost



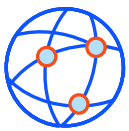
No mobile data cap



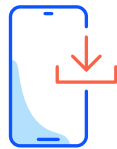
Ethernet Access

Mobile – How it works

Ethernet Access Fibre + Rapid Activation + Mobile Backup



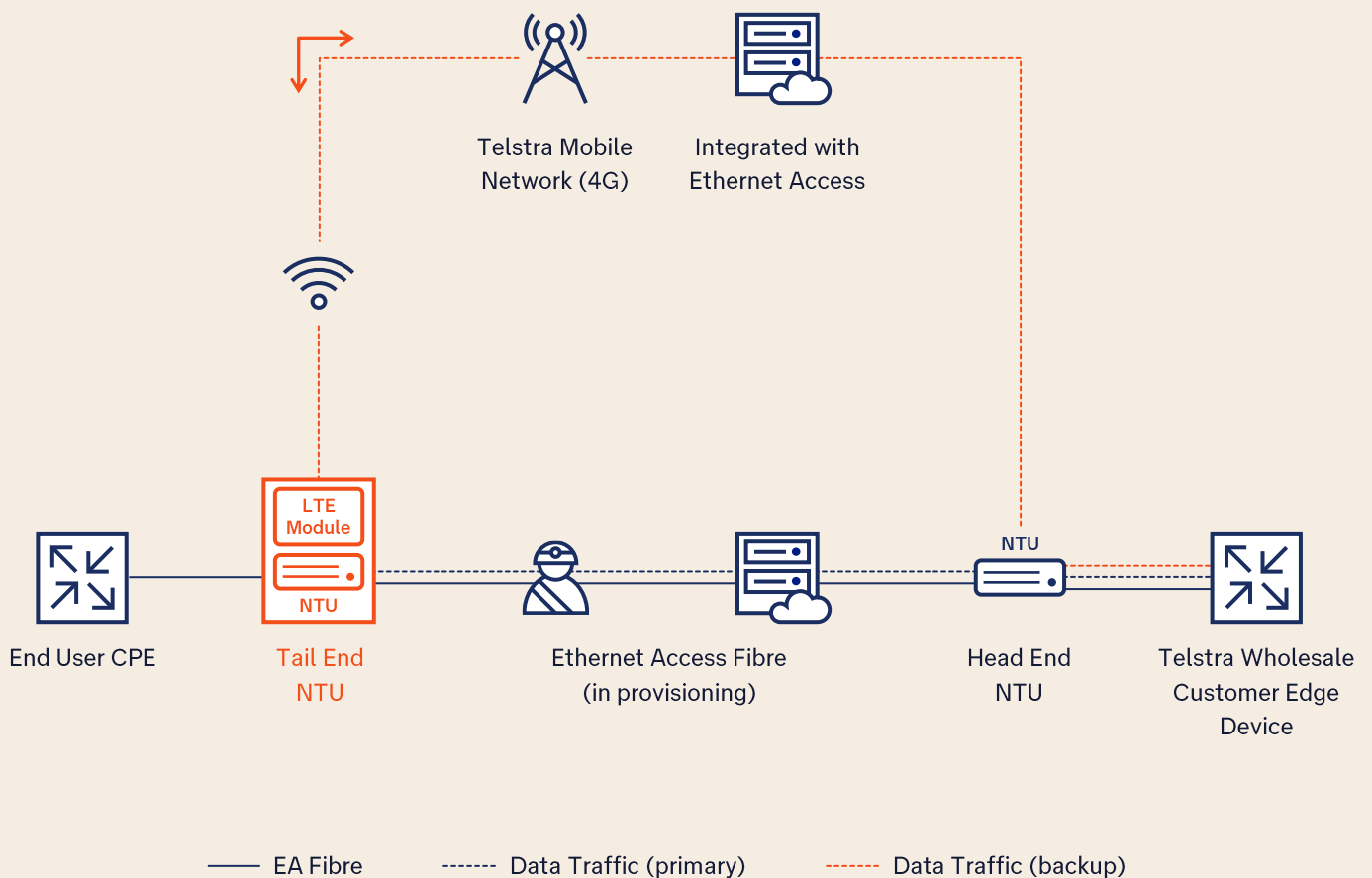
Ethernet Access delivered through Wholesale part of Telstra's Mobile Network



Converts to mobile backup once fibre is activated



Multiple speed tiers available
Up to 10, 20, 40 and 100/50Mbps





For more information, please:

- Contact your Telstra Wholesale account manager for existing customers
- Contact our **Telstra Wholesale team** for new enquires
- Visit telstrawholesale.com.au



Documents

Ethernet Access Fact Sheet:

- [EA Factsheet](#)

Ethernet Access Data sheets:

- [E-Line](#)
- [E-Access](#)